

File Stream Licence Manager

File Stream controls its licensing by embedding the names of authorised PCs within the licence. When a user tries to access File Stream the application checks that the PC is valid by comparing its name to those contained in the licence held on the local server.

To add new PCs and remove old ones from the license, a Licence Manager application has been developed to cater for this. This application can be installed and run on the server or on a local PC. It is intended for use by systems administrators.

Once installed in can be accessed via Start / All Programs /Filestream Ltd / Licence Manager. On opening, click on the button labelled OPEN and browse to the licence location.

Once the licence is opened three tabs are visible. The first one shows the customer details. The second one shows the licence details:

| License | Total | Used | Free |
|--------------------------|-----------|------|------|
| Network Concurrent Users | 30 | | |
| Web Concurrent Users | 30 | | |
| Maximum Cabinets | unlimited | | |
| Workstations | 30 | 21 | 9 |
| Web Servers | 10 | 8 | 2 |
| Scheduler Services | 10 | 8 | 2 |
| OCR Services | 10 | 7 | 3 |
| OCR Licenses | 30 | 21 | 9 |
| Advanced OCR Licenses | 30 | 21 | 9 |
| Barcode Licenses | 30 | 21 | 9 |
| ISIS Licenses | 30 | 20 | 10 |
| Workflow | yes | | |
| Searchable Disk | yes | | |
| Outlook Add-in | yes | | |
| Image Conversion | yes | | |

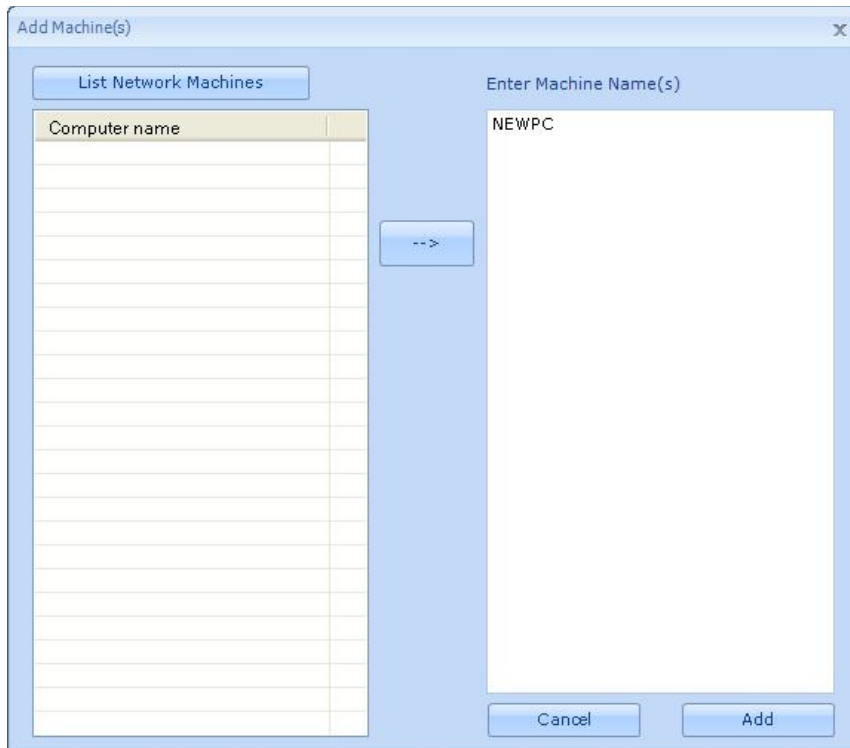
The third tab shows what PCs are licensed and lists the PC names. (To obtain the PC name click on Start / Right click on My Computer / Properties / Computer Name tab. We are only interested in the part of the Computer Name before the full stop.)

| Machine | Workstation | OCR | Advanced OCR | Barcode | ISIS | Web Server | Scheduler | OCR Service |
|----------------|-------------|-----|--------------|---------|------|------------|-----------|-------------|
| CAHDESKTOP | Y | Y | Y | Y | Y | | | |
| CAHNEW | Y | Y | Y | Y | Y | Y | Y | Y |
| CHARLESDESKTOP | Y | Y | Y | Y | Y | | | |
| FILESTREAM | Y | Y | Y | Y | Y | | | |
| GARYSCOMPUTER | Y | Y | Y | Y | Y | | | |
| JANICEG | Y | Y | Y | Y | Y | | | |
| JBWLAPTOP | Y | Y | Y | Y | | | | |
| JOLYONDESKTOP | Y | Y | Y | Y | Y | | | |
| LECTUSUK1 | Y | Y | Y | Y | Y | Y | Y | Y |
| LECTUSWEB1 | Y | Y | Y | Y | Y | | | |
| LOUISEM | Y | Y | Y | Y | Y | | | |
| MJGLAP | Y | Y | Y | Y | Y | Y | | |
| MJGLAPTOP1 | Y | Y | Y | Y | Y | Y | Y | Y |
| PAULAP | Y | Y | Y | Y | Y | Y | Y | Y |
| PAULSDESKTOP | Y | Y | Y | Y | Y | Y | Y | Y |
| SCANNER-PC | Y | Y | Y | Y | Y | Y | Y | Y |
| SOPHIESPC | Y | Y | Y | Y | Y | | Y | |
| TERMINALSERVER | Y | Y | Y | Y | Y | | | |
| TEST | Y | Y | Y | Y | Y | | | |
| WINDOWS-64BIT | Y | Y | Y | Y | Y | Y | Y | Y |
| toshiba-laptop | Y | Y | Y | Y | Y | | | |

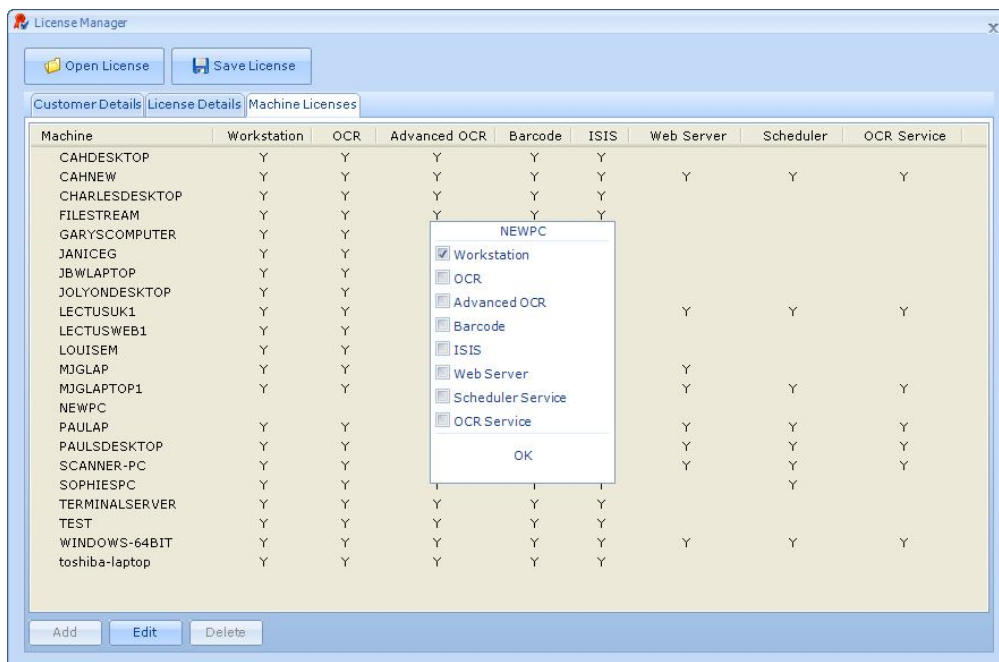
ADD NEW WORKSTATIONS

To add a new computer to the list, first of all check by looking at the second tab that the license still has free capacity for additional PCs and any additional features such as OCR that you may require are available.

On the third tab click on the Add button and you will see the following:



There are two ways to enter a new machine name. Clicking on “List Network Machines” and a list of all those currently switched on will appear and selection can be made. You can also enter a machine name directly on the RHS as shown above and click on the Add button. Once it has been added to the list, click on it to highlight and select the Edit button which displays the inset panel shown below to allow selection of different features. In the example shown Workstation only has been ticked.



Once all changes to the license have been made click on "Save License". Keep the file name and location the same otherwise existing users will not be able to login.

DELETE WORKSTATIONS

When PCs are removed from the network it's vital that they are also removed from the File Stream license. This then frees up capacity on the license to add new PCs when required.

To do this click on the PC name to highlight it followed by clicking on the Delete button.